



# \* CMG-SMART SOLUTIONS

Powering Intelligent Nations

A Strategic Company Under Circlemoon Group



# Company Overview

- **CMG-Smart Solutions is a Sovereign-Aligned Digital Infrastructure and intelligent systems company established to architect, deploy, and operate mission-critical smart ecosystems across government, industrial, logistics, retail, and strategic national sectors.**
- **Operating under the strategic umbrella of Circlemoon Group, CMG-Smart was founded with a clear mandate: to serve as a long-term sovereign infrastructure partner delivering scalable, secure, and future-ready digital transformation programs aligned with national modernization agendas.**
- **The company integrates advanced system architecture, artificial intelligence, real-time operational intelligence, and enterprise-grade cybersecurity into unified infrastructure frameworks that enhance governance efficiency, strengthen operational resilience, and enable data-driven institutional performance.**
- **CMG-SMART does not operate as a conventional systems integrator. It functions as a full lifecycle infrastructure architect — designing, implementing, operating, and continuously optimizing intelligent platforms that transition institutions from fragmented legacy operations to unified, data-centric ecosystems.**



[Get Started](#)



# Strategic Positioning

CMG-Smart Solutions is structured to balance sovereign infrastructure responsibility with scalable technology innovation.

**The Group operates through a dual-architecture model**

This structural separation ensures capital discipline, governance clarity, risk insulation, and long-term valuation optimization — while maintaining unified strategic direction under Circlemoon Group.

## CMG-Smart Infrastructure Division

Responsible for national-scale projects, command and control systems, smart ports, public sector digital platforms, and long-term operational contracts.

## CMG-Smart Technologies Division

Responsible for modular intelligent platforms, AI analytics engines, smart command software, and scalable digital products designed for replication and regional expansion.

Through this model, CMG-SMART combines infrastructure stability with technology scalability



# Our **Timeline**



## **Vision**

To become the leading national and regional architect of intelligent infrastructure ecosystems, advancing sovereign digital transformation and institutional resilience

## **Mission**

To design, deploy, and operate integrated digital infrastructure platforms that enhance governance performance, mitigate systemic risk, and enable real-time data-driven decision-making across strategic sectors

# Why Now? The Problem We Solve

Governments, public institutions, and large operators are under pressure to modernize faster, operate smarter, and protect critical infrastructure.

## 1. Fragmented legacy systems

Disconnected platforms, manual processes, and limited system integration.

## 2. Delayed operational visibility

Weak real-time monitoring, slow crisis detection, and limited executive dashboards.

## 3. Rising cyber and infrastructure risks

Increasing exposure to cyber threats, data fragmentation, and operational disruption.

**Result: lower productivity, slower service delivery, higher risk, and weaker institutional control.**

**Infrastructure modernization is no longer optional. It is a national foundation for resilience, efficiency, and competitiveness.**

# Integrated Infrastructure Architecture

CMG-Smart operates through a five-layer intelligent infrastructure framework:

## Physical Infrastructure Layer

Secure IoT networks, sensor ecosystems, command centers, and integrated communication platforms form the operational deployment foundation.

## Data & Intelligence Layer

Real-time analytics engines, predictive modeling systems, and AI-driven frameworks convert data into actionable institutional intelligence.

## Control & Governance Layer

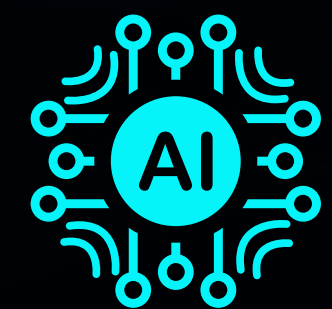
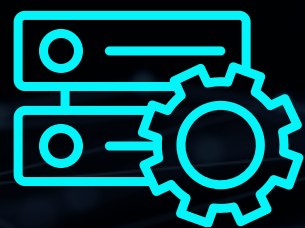
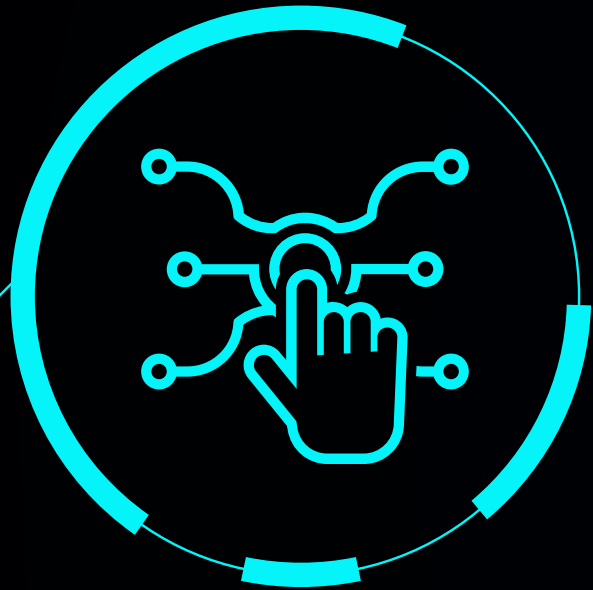
Executive dashboards, automated alerts, crisis response interfaces, and structured reporting tools enable operational transparency and centralized oversight.

## Cybersecurity & Sovereignty Layer

Enterprise-grade cybersecurity architecture, sovereign-aligned cloud environments, and advanced data protection frameworks ensure operational integrity and compliance.

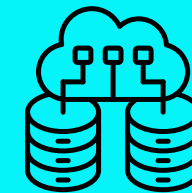
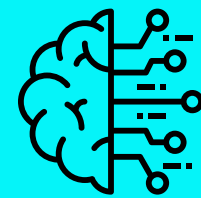
## Sustainability & Resilience Layer

Scalable design, redundancy protocols, and business continuity mechanisms safeguard long-term durability and performance stability.



# Objectives

- To design and deploy sovereign-aligned digital infrastructure that enhances national operational efficiency and institutional performance.
- To integrate artificial intelligence and real-time analytics into unified platforms that enable predictive governance and data-driven decision-making.
- To establish long-term strategic partnerships with governments and key sectors through scalable, secure, and resilient smart ecosystems.
- To maintain technological leadership through continuous innovation, advanced cybersecurity standards, and sustainable infrastructure development.



# What We Deliver

Integrated digital infrastructure solutions across strategic sectors.

**Across all sectors: interoperability, scalability, cybersecurity, and long-term operational continuity.**

**Selected references and past project details are available under NDA.**



## Government & National Infrastructure

Command centers, crisis detection platforms, real-time dashboards, digital governance systems, and institutional control environments.



## Ports, Logistics & Industrial Zones

Smart port systems, cargo intelligence, warehouse digitalization, fleet visibility, and supply chain monitoring platforms.



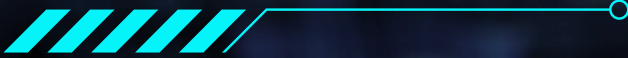
## Retail & Commercial Ecosystems

Smart mall platforms, POS integration, tenant intelligence, inventory visibility, footfall analytics, and consumer behavior insights.



## Security & Industrial Infrastructure

Surveillance networks, access control, industrial monitoring, cybersecurity architecture, and centralized command environments.

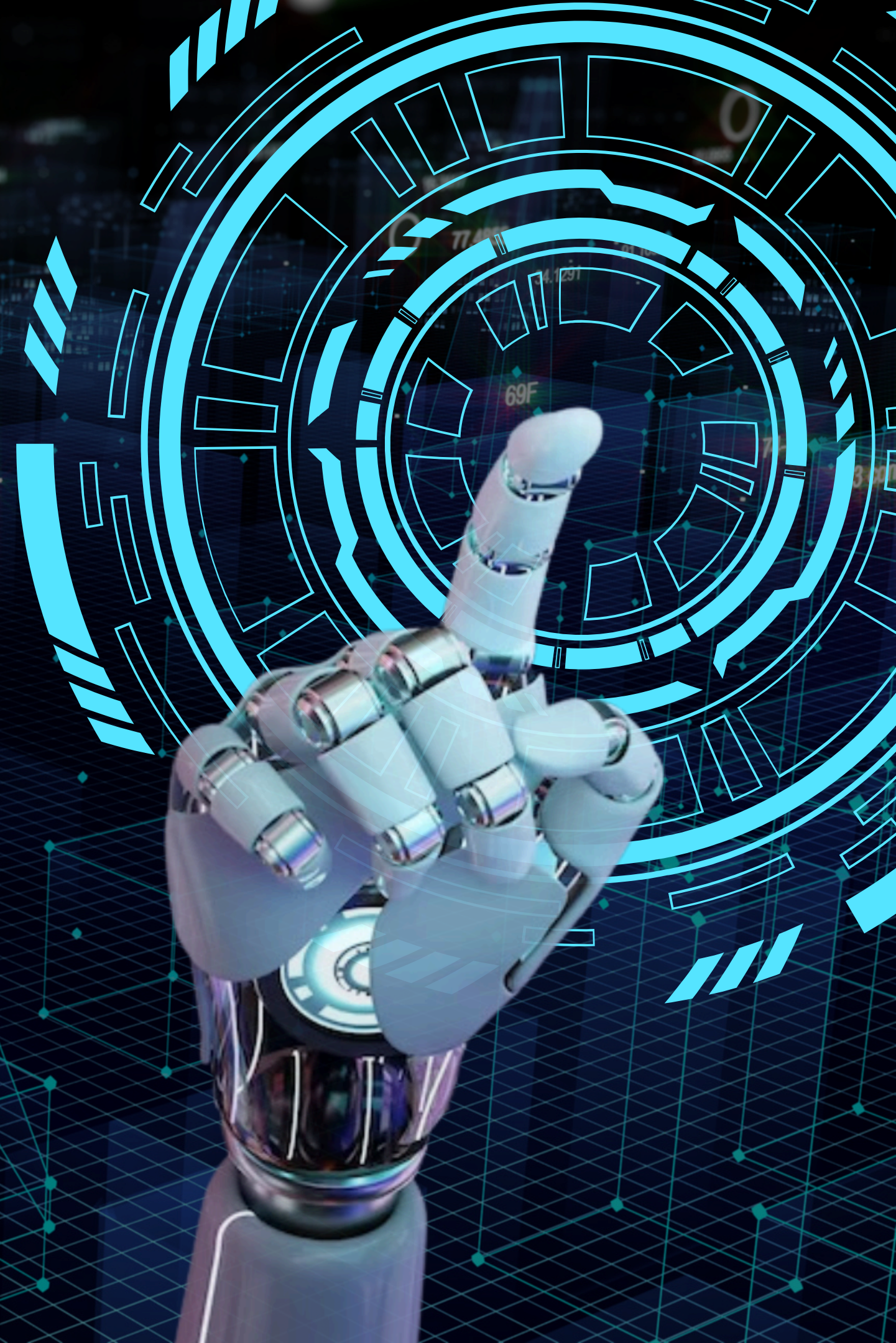


# Execution Model

CMG-E follows a structured lifecycle methodology

- Strategic assessment and institutional infrastructure mapping
- System architecture and technical blueprint development
- Infrastructure deployment and systems integration
- Platform activation and intelligence configuration
- Operational management and performance monitoring
- Continuous optimization and technology enhancement

**This framework ensures disciplined implementation, risk mitigation, and measurable institutional outcomes.**





# Business & Revenue Model

- The Infrastructure Division generates revenue through structured government contracts, PPP frameworks, concession models, and long-term O&M agreements.
- The Technologies Division generates revenue through software licensing, SaaS subscriptions, AI analytics services, and platform integration solutions.
- This hybrid model balances predictable infrastructure income with scalable recurring technology revenue — ensuring financial resilience and long-term growth.



# Our Clear Competitive Edge

CMG-Smart differentiates itself through a practical advantage model:

Market Challenge	CMG-Smart Advantage
Fragmented vendors	Full lifecycle ownership
Short-term delivery	Long-term strategic partnerships
Generic technology tools	AI-native operational intelligence
Vendor lock-in	Modular and sovereign-aligned architecture
Limited governance clarity	Board-level oversight and structured reporting
Single revenue dependency	Hybrid infrastructure + SaaS revenue model
Weak scalability	Replicable platforms across sectors and regions

**Result: institutional trust + technical depth + governance discipline + scalable growth.**

# Governance Backed by Standards

CMG-Smart operates under the strategic governance framework of Circlemoon Group, with clear oversight, risk controls, and reporting discipline.

- **Board-level oversight**

Strategic supervision, accountability, and transparent reporting.

- **Cybersecurity and risk controls**

Security-by-design architecture aligned with recognized cybersecurity and risk management frameworks.

- **Sovereign-aligned data protection**

Cloud, data, and infrastructure models designed to support national security and institutional control.

- **Dual-division structure**

Infrastructure activities are separated from technology scaling risk while remaining strategically aligned under one group framework.

**Relevant certifications, compliance documents, and technical standards can be shared for review upon request.**

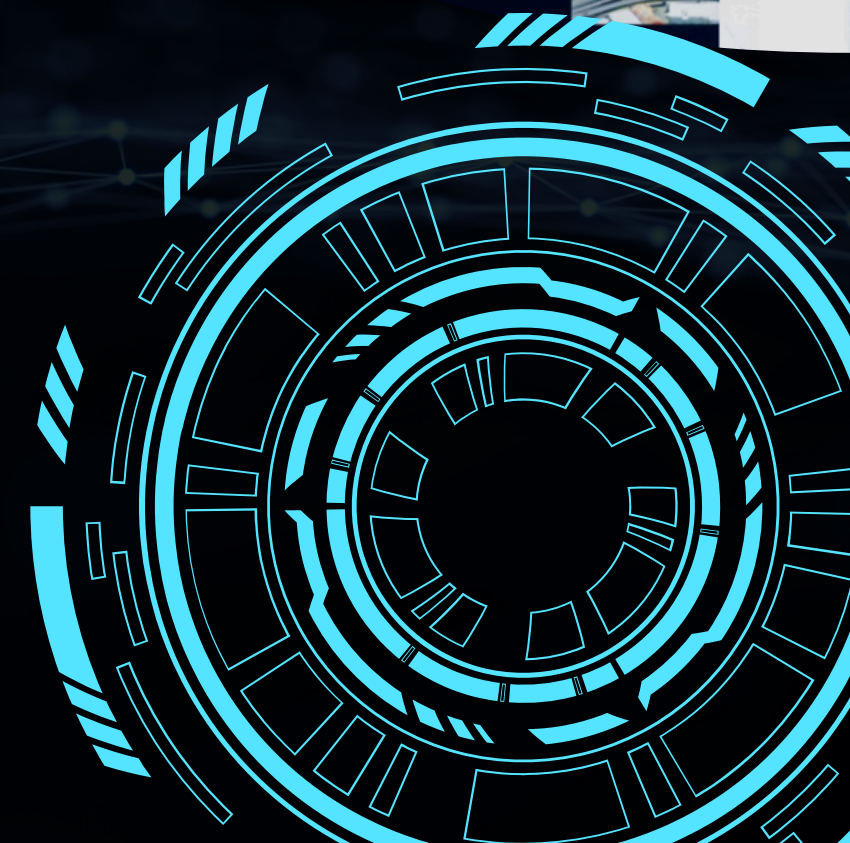


# Long-Term Outlook

CMG-SMART's roadmap prioritizes

- Domestic deployment and institutional partnerships
- Sectoral expansion across ports, logistics, and commercial ecosystems
- Regional expansion across GCC and African markets
- Continuous advancement of AI-driven operational intelligence capabilities

The long-term objective is to position CMG-SMART as a national digital infrastructure engine with regional scalability and institutional durability.



# Closing Position

**CMG-Smart is not a conventional technology provider.**

We are a sovereign-aligned digital infrastructure platform designed to support national modernization, operational transformation, and institutional resilience.

Through integrated architecture, AI-enabled intelligence, cybersecurity discipline, and long-term operating partnerships, CMG-Smart helps institutions move from fragmented systems to unified, data-driven ecosystems.

**Built to serve as a long-term infrastructure partner for intelligent nations.**

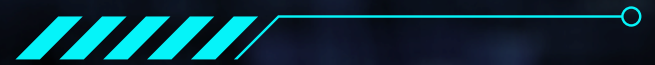
---

## Partnership Inquiries

Email: [Insert official email] | Website: [Insert website]

Headquarters: [Insert location]





# Thank You



**CMG**  
Investments